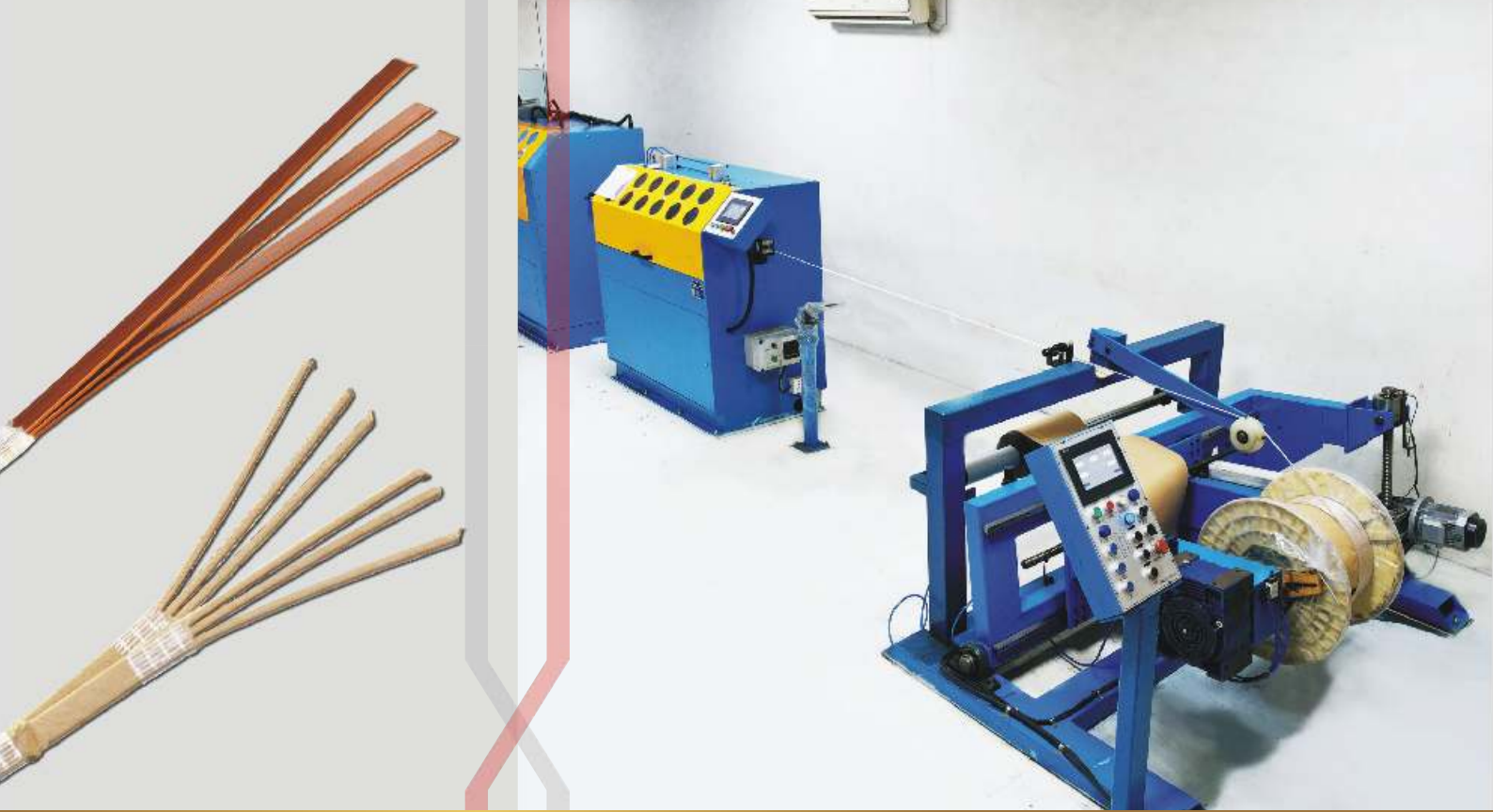




INTERNATIONAL

[www.kshinternational.com](http://www.kshinternational.com)

# Speciality Products



## Typical Applications

- ✕ Power Transformers
- ✕ HVDC Transformers
- ✕ Generator Transformers
- ✕ Traction Transformers
- ✕ Electrical Rotating Machines
- ✕ 765 Kv Transformers and Reactors
- ✕ 1200 Kv Transformers

# Speciality Products

## Twin, Triple, upto Six Conductors Bunch Winding Wire for Power Transformers (Axial & Radial) with Epoxylite® option available

Typical Advantages

- ✕ Better space factor
- ✕ Better heat dissipation
- ✕ Higher dielectric strength
- ✕ Higher thermal stability
- ✕ Higher mechanical strength of the insulation
- ✕ Higher thermal overload capacity
- ✕ Easier to process than paper insulated conductors of the same section
- ✕ Reduces eddy current losses

## Proof Stress Copper Winding Wire to improve short circuit strength of wound coils

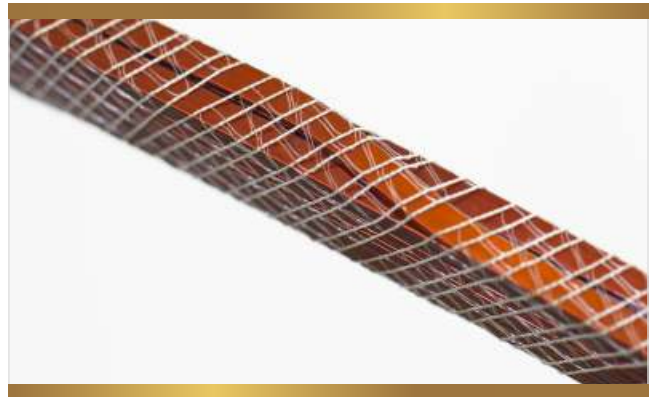
Typical Advantages

- ✕ CPR 1: 140 N/mm<sup>2</sup> - 200 N/mm<sup>2</sup>
- ✕ CPR 2: 170 N/mm<sup>2</sup> - 220 N/mm<sup>2</sup>
- ✕ CPR 3: 220 N/mm<sup>2</sup> - 260 N/mm<sup>2</sup>

## CTC with Epoxylite® Coating and Netting Tape

Typical Advantages

- ✕ High short circuit force stability
- ✕ Partial Discharge (PD) free for applications in interleaved type windings
- ✕ Lower losses in Transformers



## Combinations of Enamel + Nomex®

### Enamel + Paper Insulated with Glued Nomex® Strip between strand

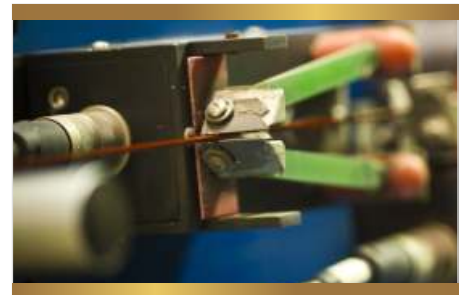
Copper Strip Enamelling



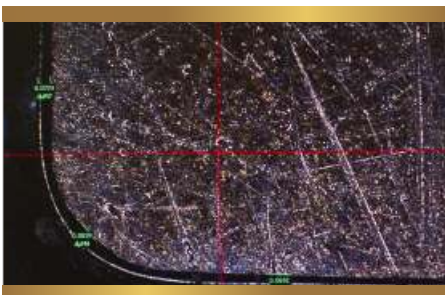
Laser Dimensional Controls & Burr Detection



Inline Fault Detectors



Precise Corner RADII



Rolling Mill



Quality Control Of Critical Parameters

